

Bubblegum

Sample ID: 2103KCA0484.1142

Cultivar: N//A

Matrix: Plant

Type: Flower - Cured

Sample Size:

Received: 03/30/2021

Completed: 04/02/2021

Batch#: 677C

Client

Recreational 8



Summary

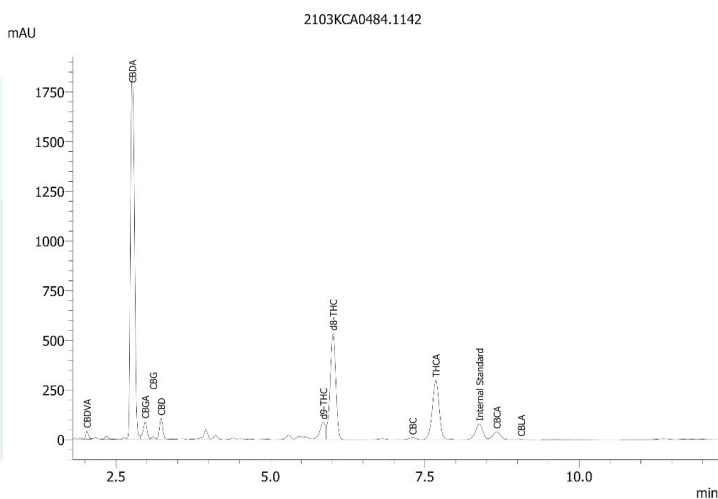
Test	Date Tested	Result
Cannabinoids	04/02/2021	Complete
Moisture	04/01/2021	10.1% - Complete
Residual Solvents	04/02/2021	Complete

Cannabinoids by HPLC-PDA

Complete

2.29915%	15.05989%	26.49825%	10.1% Complete	Not Tested
Total THC	Total CBD	Total Cannabinoids	Moisture Content	Foreign Matter

Analyte	LOD %	LOQ %	Result %	Result mg/g
CBC	0.00095	0.00280	0.07157	0.7157
CBCA	0.00181	0.00540	0.83871	8.3871
CBCV	0.00060	0.00180	ND	ND
CBD	0.00081	0.00240	0.43718	4.3718
CBDA	0.00043	0.00130	16.67355	166.7355
CBDV	0.00061	0.00180	ND	ND
CBDVA	0.00021	0.00060	0.10486	1.0486
CBG	0.00057	0.00170	0.05610	0.5610
CBGA	0.00049	0.00150	0.37271	3.7271
CBL	0.00112	0.00330	ND	ND
CBLA	0.00124	0.00370	0.01278	0.1278
CBN	0.00056	0.00170	ND	ND
CBNA	0.00060	0.00180	ND	ND
Δ8-THC	0.00104	0.00310	5.33850	53.3850
Δ9-THC	0.00076	0.00230	0.20901	2.0901
THCA	0.00084	0.00250	2.38328	23.8328
THCV	0.00069	0.00210	ND	ND
THCVA	0.00062	0.00190	ND	ND
Total THC			2.29915	22.99150
Total CBD			15.05989	150.59890
Total			26.49825	264.9825



Total THC = THCA * 0.877 + Δ9-THC

Total CBD = CBDA * 0.877 + CBD

LOD = Limit of Detection

LOQ = Limit of Quantitation

ND = None Detected

For plant material, the reported result is based on a sample weight with the applicable moisture content for that sample.



Wes Rogers

Wes Rogers
Principal Scientist
04/02/2021



ISO/IEC 17025:2017 Accredited
Accreditation #108651

Bubblegum

Sample ID: 2103KCA0484.1142

Cultivar: N/A

Matrix: Plant

Type: Flower - Cured

Sample Size:

Received: 03/30/2021

Completed: 04/02/2021

Batch#: 677C

Client

Recreational 8

Residual Solvents by HS-GC/MS

Complete

Analyte	LOD PPM	LOQ PPM	Mass PPM	Analyte	LOD PPM	LOQ PPM	Mass PPM
Acetone	0.5	1	22.178	Heptane	0.5	1	ND
Acetonitrile	0.5	1	5.967	Isobutane	0.5	1	ND
Benzene	0.5	1	ND	Isopropanol	0.5	1	<LOQ
Butane	0.5	1	ND	Isopropyl-Acetate	0.5	1	ND
1-Butanol	0.5	1	ND	Methanol	0.5	1	192.582
2-Butanol	0.5	1	ND	2-Methyl-Butane	0.5	1	ND
2-Butanone	0.5	1	1.165	2-Methyl-Pentane	0.5	1	ND
Chloroform	0.5	1	ND	3-Methyl-Pentane	0.5	1	ND
Cumene	0.5	1	ND	Methylene-Chloride	0.5	1	ND
Cyclohexane	0.5	1	ND	N,N-Dimethyl-Acetamide	0.5	1	ND
1,2-Dichloro-Ethane	0.5	1	ND	N,N-Dimethyl-Formamide	0.5	1	ND
1,2-Dimethoxy-Ethane	0.5	1	ND	Neopentane	0.5	1	ND
2,2-Dimethyl-Butane	0.5	1	ND	1-Pentanol	0.5	1	ND
2,3-Dimethyl-Butane	0.5	1	ND	Propane	0.5	1	ND
Dimethyl sulfoxide	0.5	1	ND	1-Propanol	0.5	1	ND
1,4-Dioxane	0.5	1	ND	Pyridine	0.5	1	ND
Ethanol	0.5	1	19.253	Sulfolane	0.5	1	ND
2-Ethoxy-Ethanol	0.5	1	ND	Tetrahydrofuran	0.5	1	ND
Ethyl-Acetate	0.5	1	1.213	Toluene	0.5	1	<LOQ
Ethyl-Benzene	0.5	1	ND	Trichloroethene	0.5	1	ND
Ethyl-Ether	0.5	1	ND	Xylenes	0.5	1	ND
Ethylene glycol	0.5	1	ND	n-Hexane	0.5	1	ND
Ethylene oxide	0.5	1	ND	n-Pentane	0.5	1	ND

Date Tested:
LOD = Limit of Detection
LOQ = Limit of Quantitation
ND = None Detected




Wes Rogers
Principal Scientist
04/02/2021